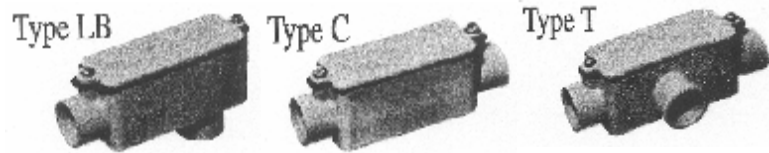


Mainline Meet Track Field Kit

Basics - Conduit Fittings & Tie Marking

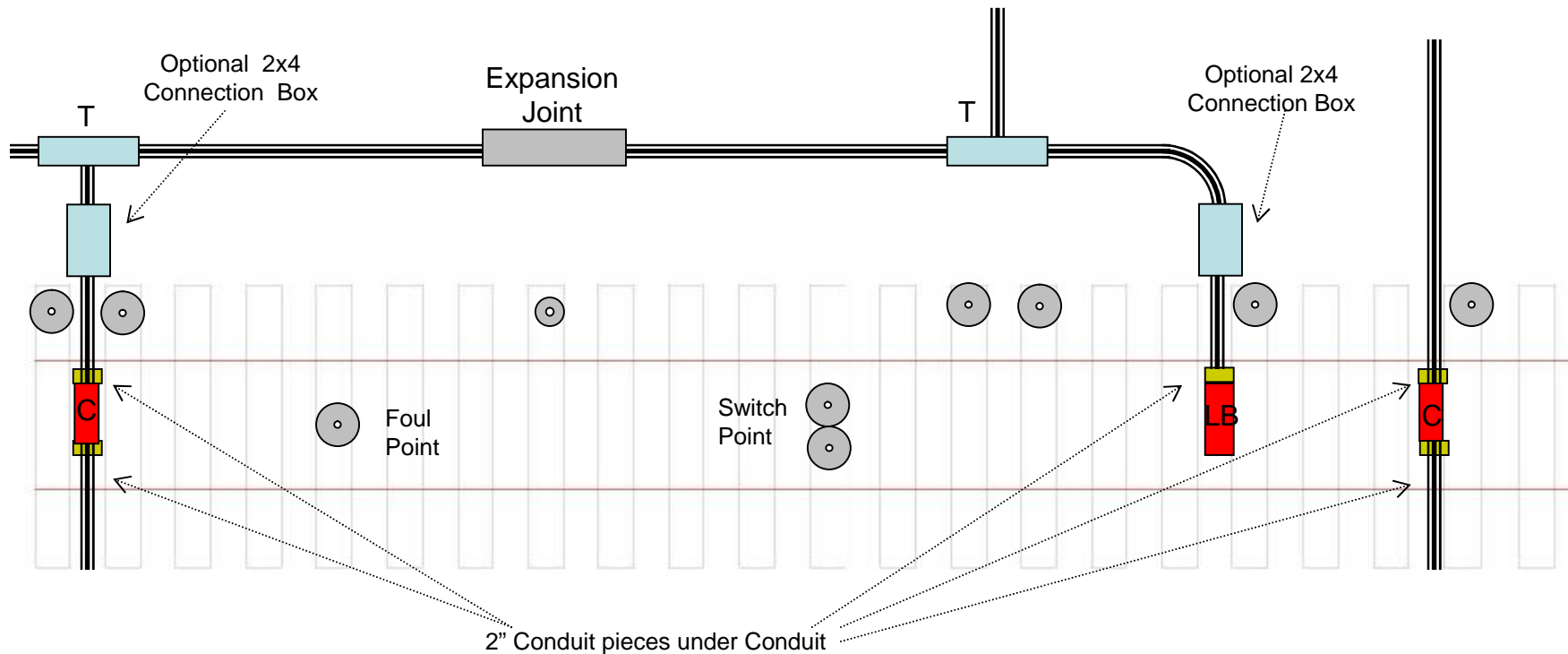
Conduit Boxes



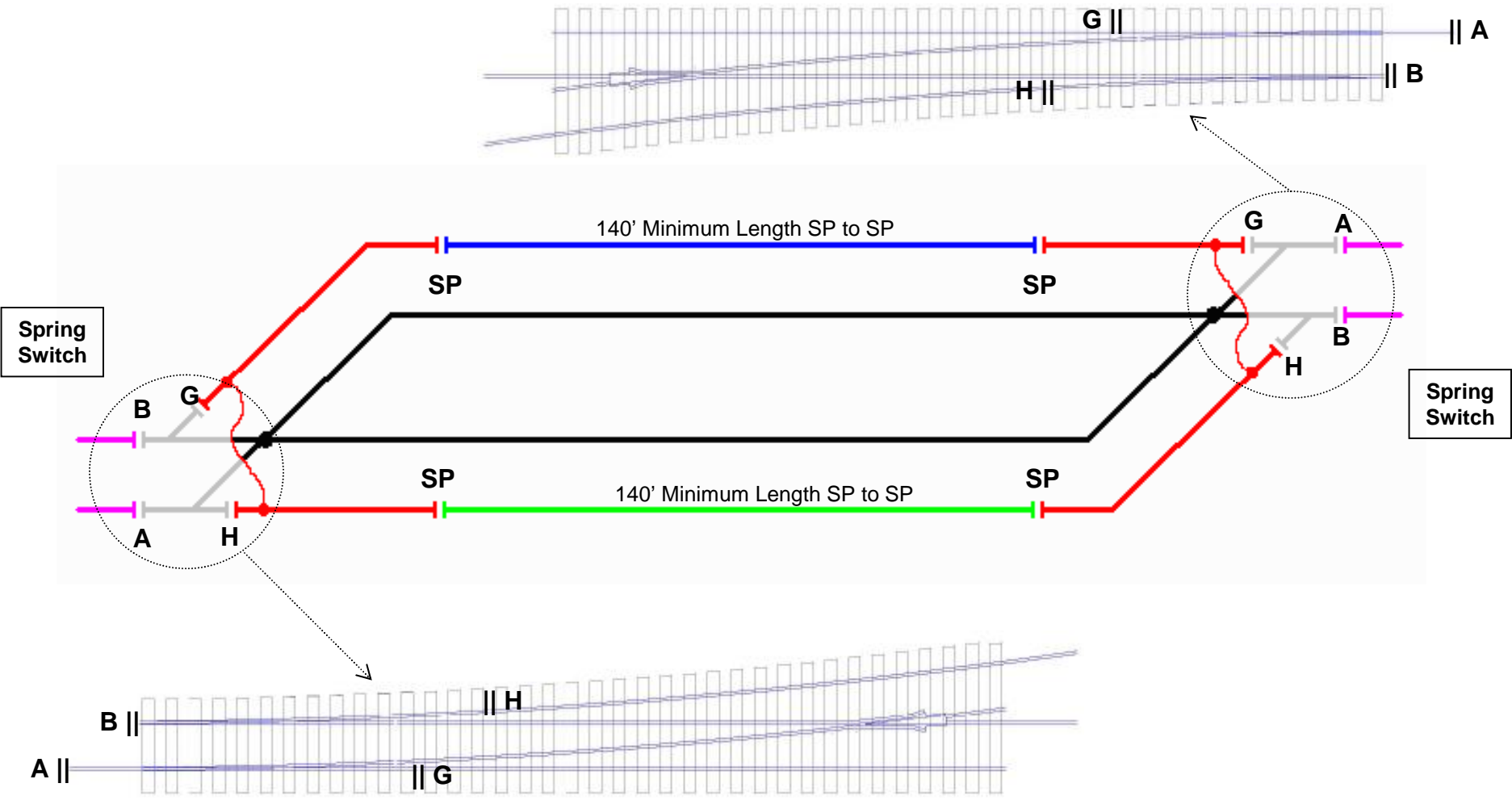
- One 2" Fender Washer at Foul Point
- Two 2" Fender Washers at Switch Point

Washers Locate Boxes

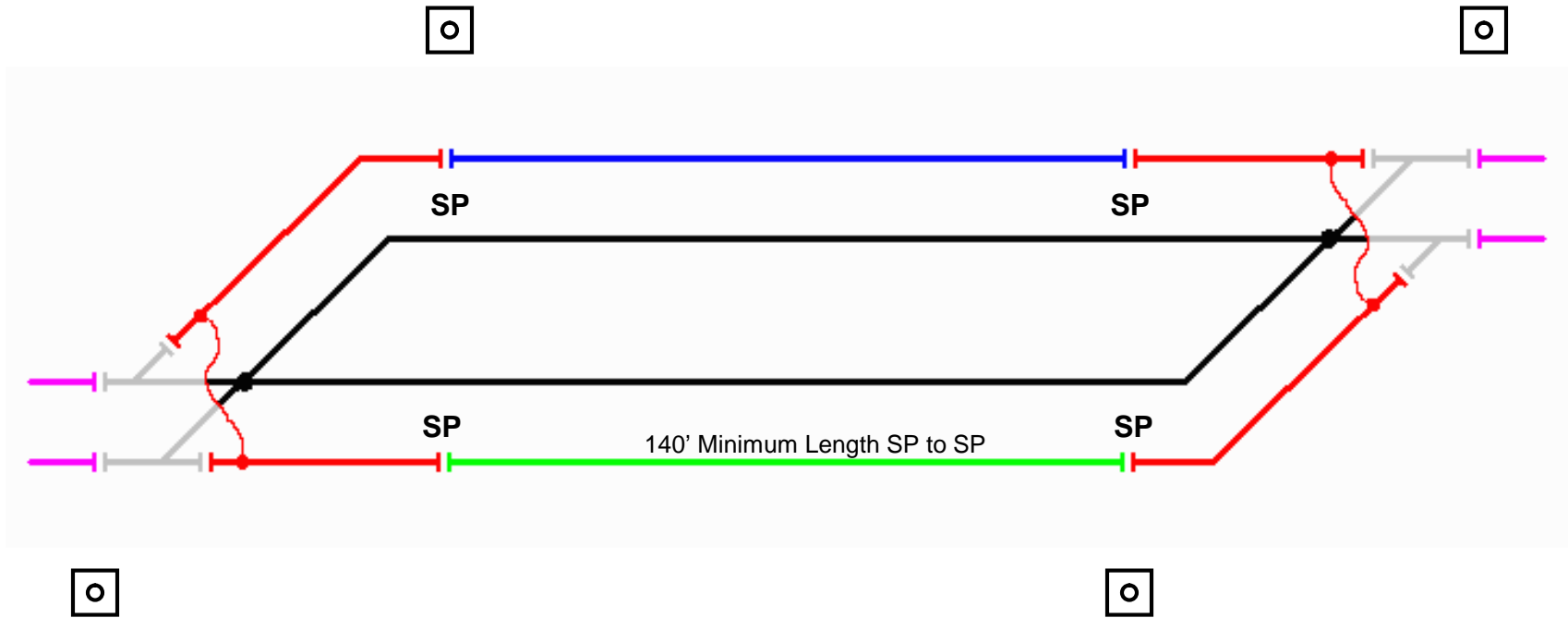
- Two 2" Fender Washers means a Type T box is nearby.
- One 2" Fender Washer means a Type C or Type LB box between the tracks.
- One 1" Washer means an Expansion Joint nearby



8. Mainline Meet Track - Track Insulators



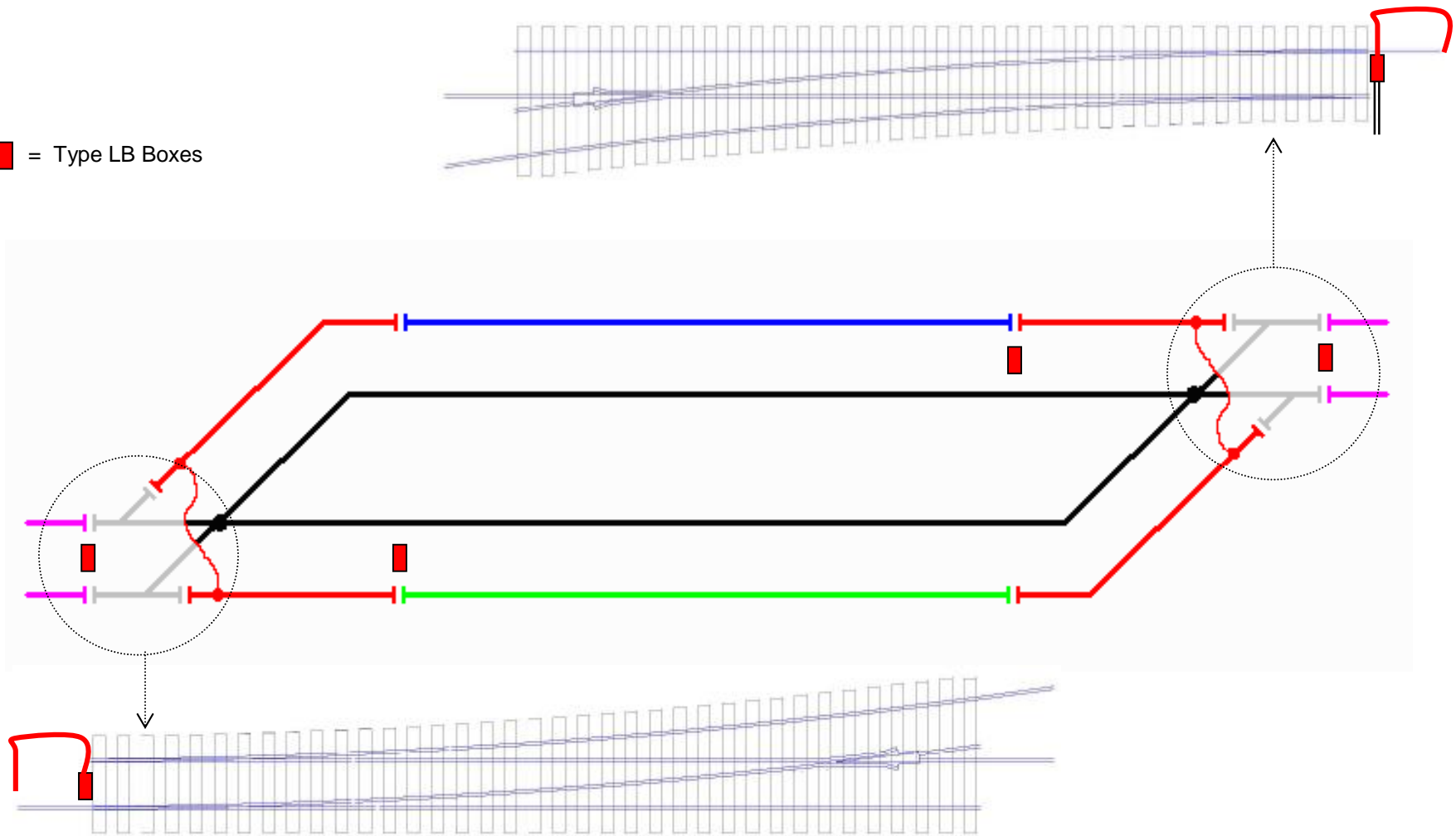
8. Mainline Meet Track - Install 4 Signal Foundations



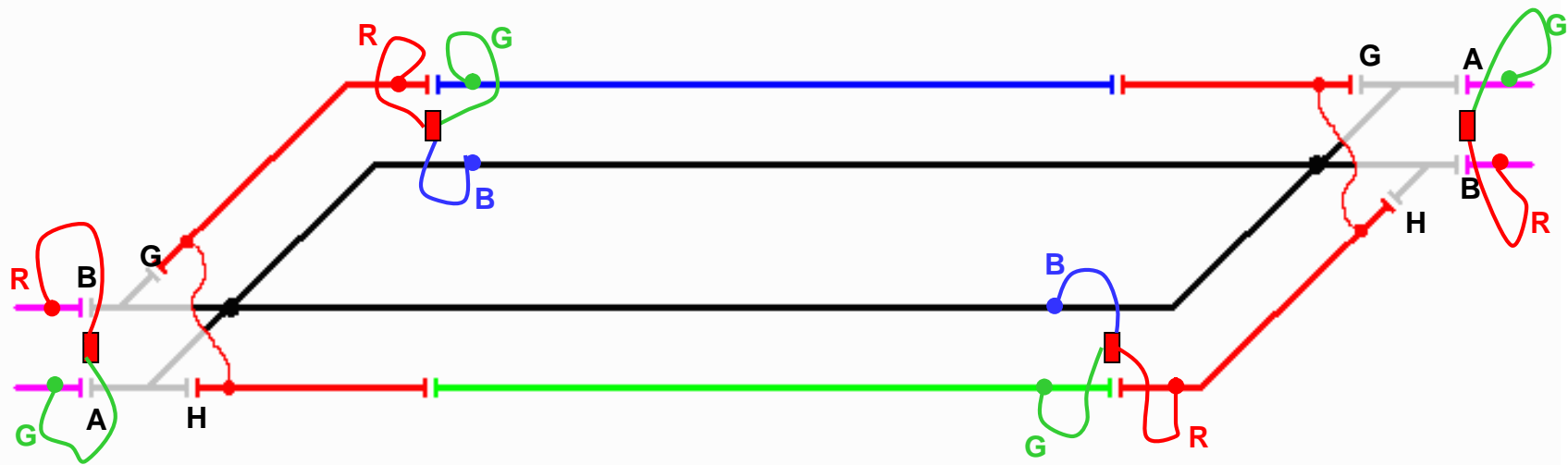
- Signal Foundation 4' from Center Line of Track
- Conduit on top of Plastic

8. Mainline Meet Track - Install 4 Track Boxes and 2 Flex Conduits

 = Type LB Boxes



8. Mainline Meet Track - Where the Wires Go

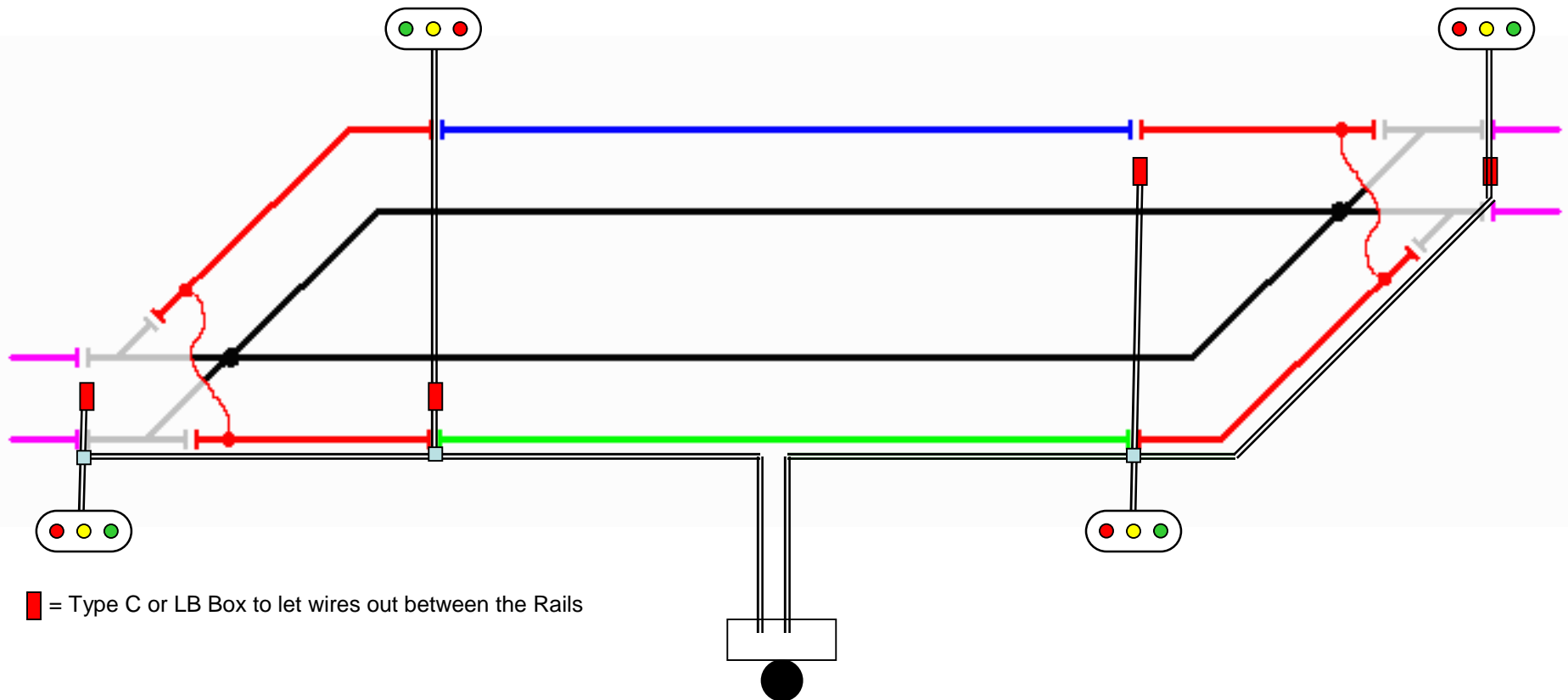
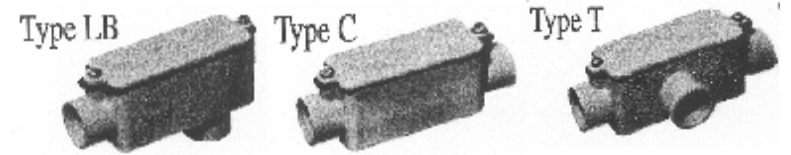


For Your Information -- No Action required

8. Mainline Meet Track - Install Conduit

- 4 Type LB or C Track Boxes
- 2 2x4 Connection Boxes

One Conduit from Enclosure to each end of Siding
Expansion Joints every 20'
Whatever Route Works



8. Mainline Meet Track - Pull Wire

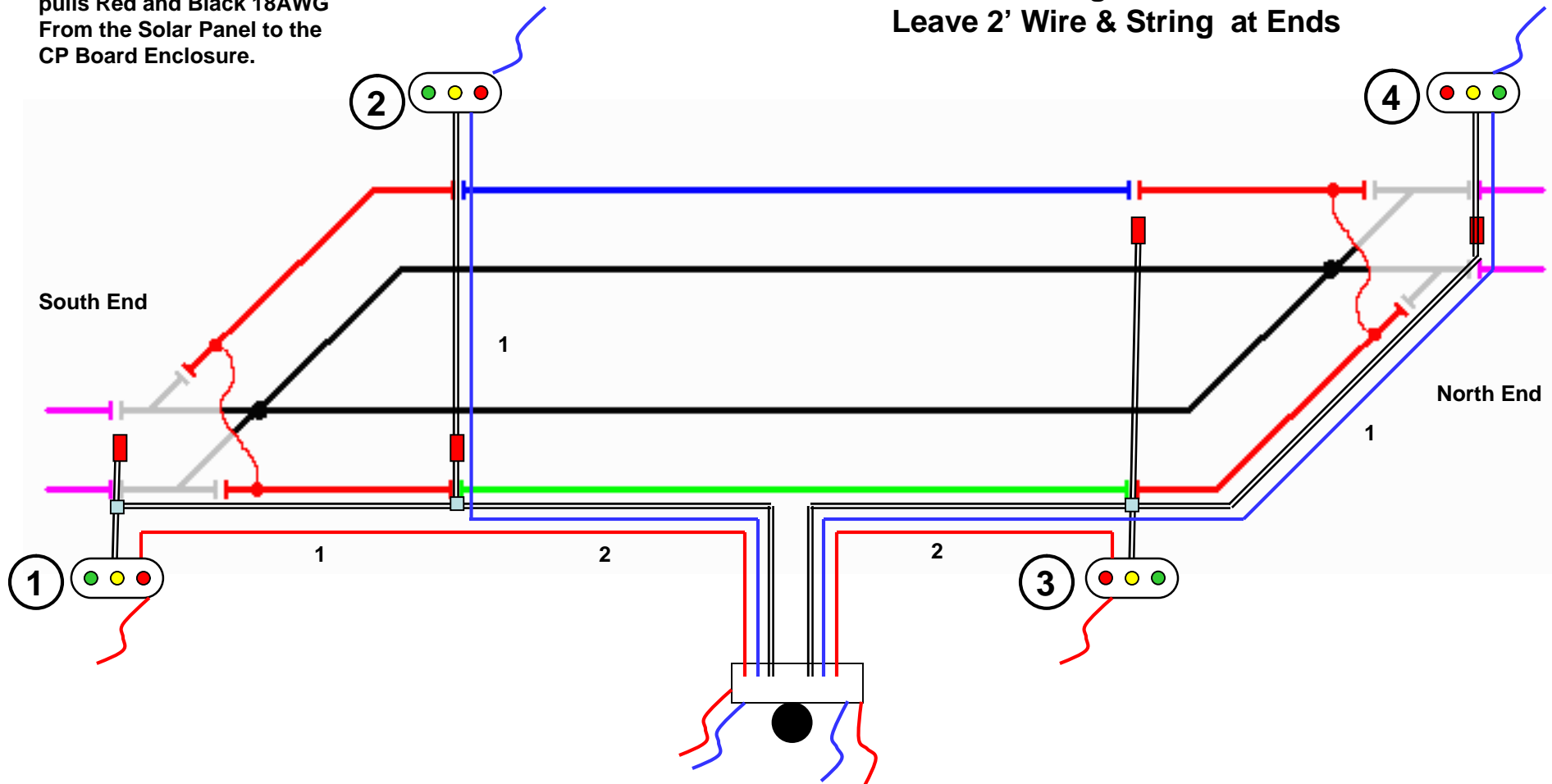
Note : The Track Team pulls all the wire that goes through an Expansion Joint. The Signal Team pulls the rest of the wire which includes all the 18 AWG wire. If there is a Remote Solar Panel, the Track Team pulls Red and Black 18AWG From the Solar Panel to the CP Board Enclosure.

Cat5 Pulls

- Enclosure to Signal 1 - Other
- Enclosure to Signal 2 - Blue
- Enclosure to Signal 3 - Other
- Enclosure to Signal 4 - Blue

- Blue Cat5 Wire
- Black Cat5 Wire
- Other color Cat5
(usually Yellow, White, or Grey)

Pull a String with the Cat5
Leave 2' Wire & String at Ends



8. Mainline Meet - Pre Ballast Checklist

Mainline Meet Track

- 140' plus Switch Point to Switch Point
- Two 100' radius Switches

Spring Switches

- 2 Spring Switches

Insulators

- 10 Track Insulators per diagram

Track Boxes

- 4 Track Boxes
- All Type C or Type LB
- All on 2" pieces of conduit

Fender Washers (FWs)

- Expansion Joints - 1" FW on Top of Tie at End
- Track Boxes - 2" FW on Top of Tie at End
- T Boxes - Two 2" FWs on top of Ties at End
- Foul Points - 2" FW on Top of Tie at Center
- Signal Points - Two 2" FWs on Top of Tie at Center

Signal Foundations

- 2 Foundation Blocks
- All at Signal Points
- All 4' from Center Line(s) of Track(s)
- 18" threaded Mast in each Foundation Block

Where _____

By _____

Date _____

Flex Conduit

- Flex Conduits per diagram

Conduit

- Enclosure to N End
- Enclosure to S End
- Enclosure to Remote Solar Panel (If Any)
- Connects to 4 Track Boxes
- Type C or LB Track Boxes between rails
- Type C or LB Track Boxes on 2" pieces of conduit
- Conduit on top of Plastic
- Expansion Joints every 20'
- 8"-10" from Tie Ends

Wire Pull

- Enclosure to Signal 1 - Other
- Enclosure to Signal 2 - Blue
- Enclosure to Signal 3 - Other
- Enclosure to Signal 4 - Blue
- String in every Conduit
- 2' wire & string at each end

Wire Pull - If Remote Solar Panel

- White & Black 18AWG wire
- String
- 2' wire & string at each end

Plywood

- Plywood over Type C box

As Built

- Map of Conduit
- All Changes Noted
- Delivered to Ross